

## ***NATURAL RESOURCES, RESILIENCY, LANDSCAPE AND SITE DESIGN***

### ***PROBLEM/ISSUE:***

- Urban farms, community gardens, food hub....LDC needs to further define compatibility issues. How do we create incentives to provide opportunities in appropriate areas? Multi-faceted values are important.

### ***PROPOSED APPROACH:***

- Create metrics that will address and define different scales of food along the transect; from rural to peri-urban and intra-urban.
- Identify “urban agriculture incentive zones.” These areas can be public/private ventures. Identify these areas by looking at food deserts found in Austin as well as scales of food production.
- Create a metric that addresses access to healthy food (groceries, farmer-to-consumer sales, etc.)

### ***CASE STUDIES:***

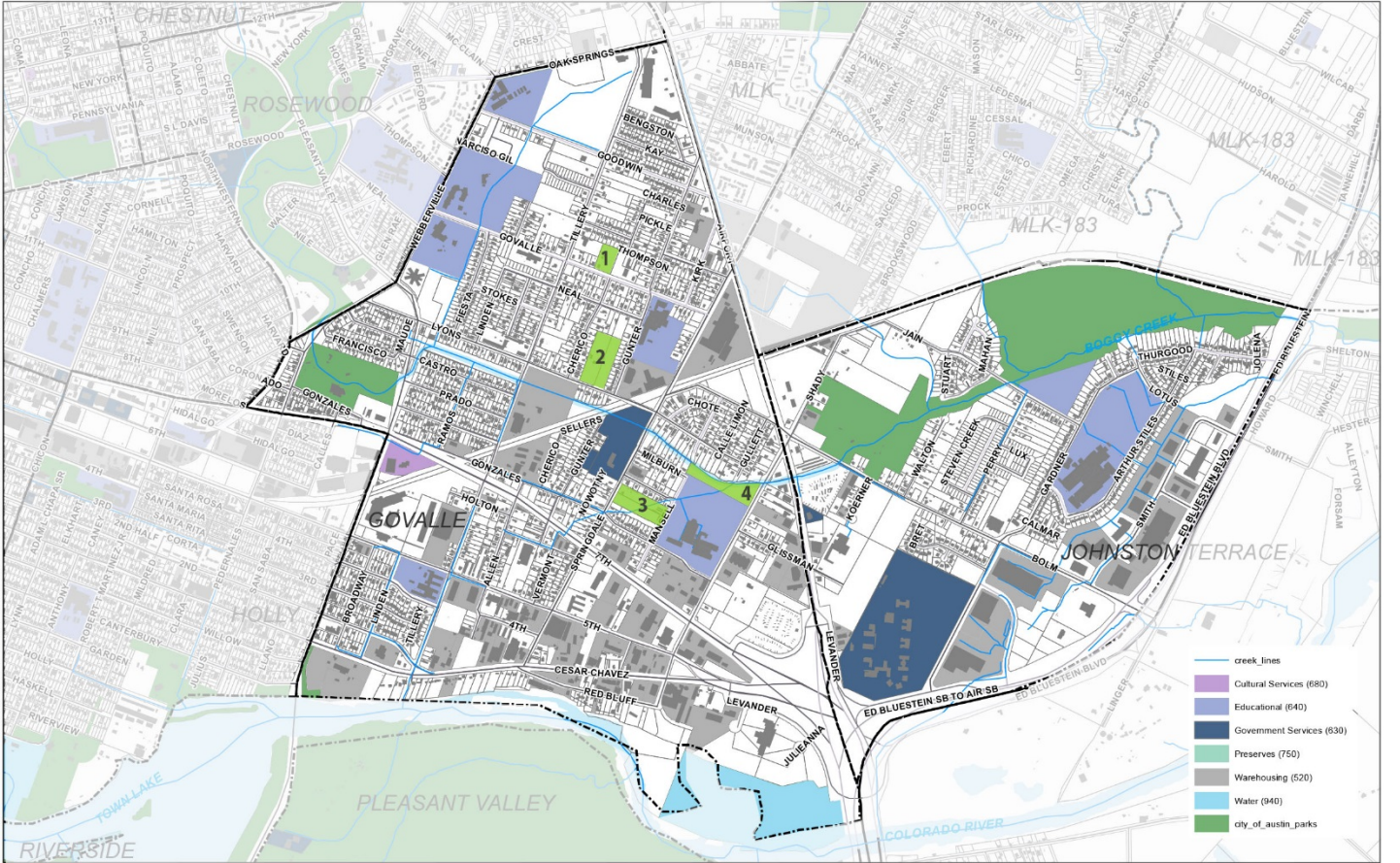
STAR Community Index: Austin is one of the 10 pilot cities now refining a new national sustainability benchmarking tool, the STAR Community Index. Star Index, HS-4: Food Access & Nutrition Evaluation Measures : Demonstrate an increase over the past 3 years in the percentage of residents within a walkable ¼ mile of a healthful food retail outlet.

(cont'd on next slide(s))

# URBAN FARMS CONTINUED

## CASE STUDIES:

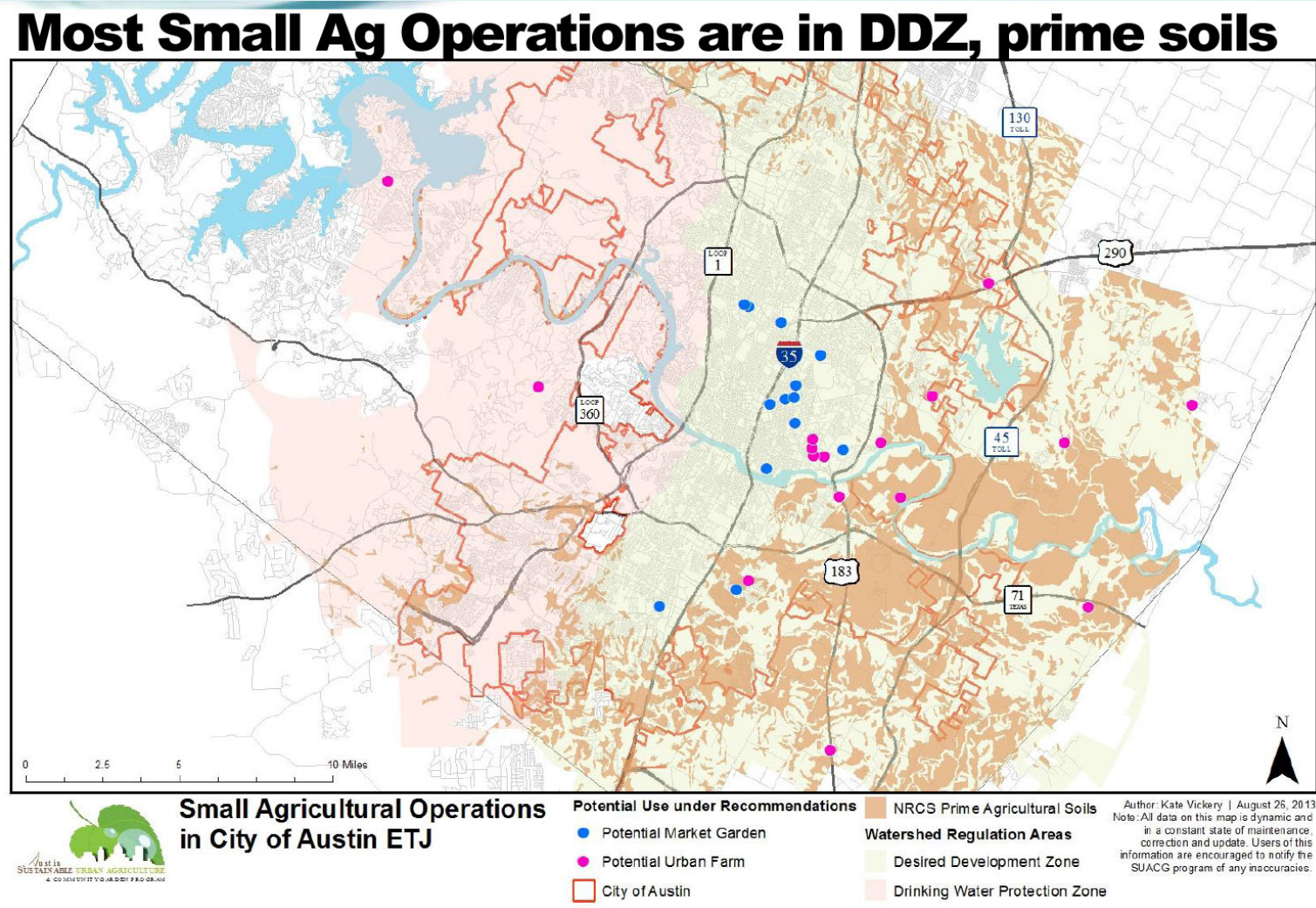
- Case study in Austin – where 4 big farms are located in East Austin. Map showing their location in relationship with the neighborhood. Identified existing open space in that neighborhood.



# URBAN FARMS CONTINUED

## CASE STUDIES:

- Austin: Add mile radius and add map of all the urban farms and market gardens found in Austin



## ***URBAN FARMS CONTINUED***

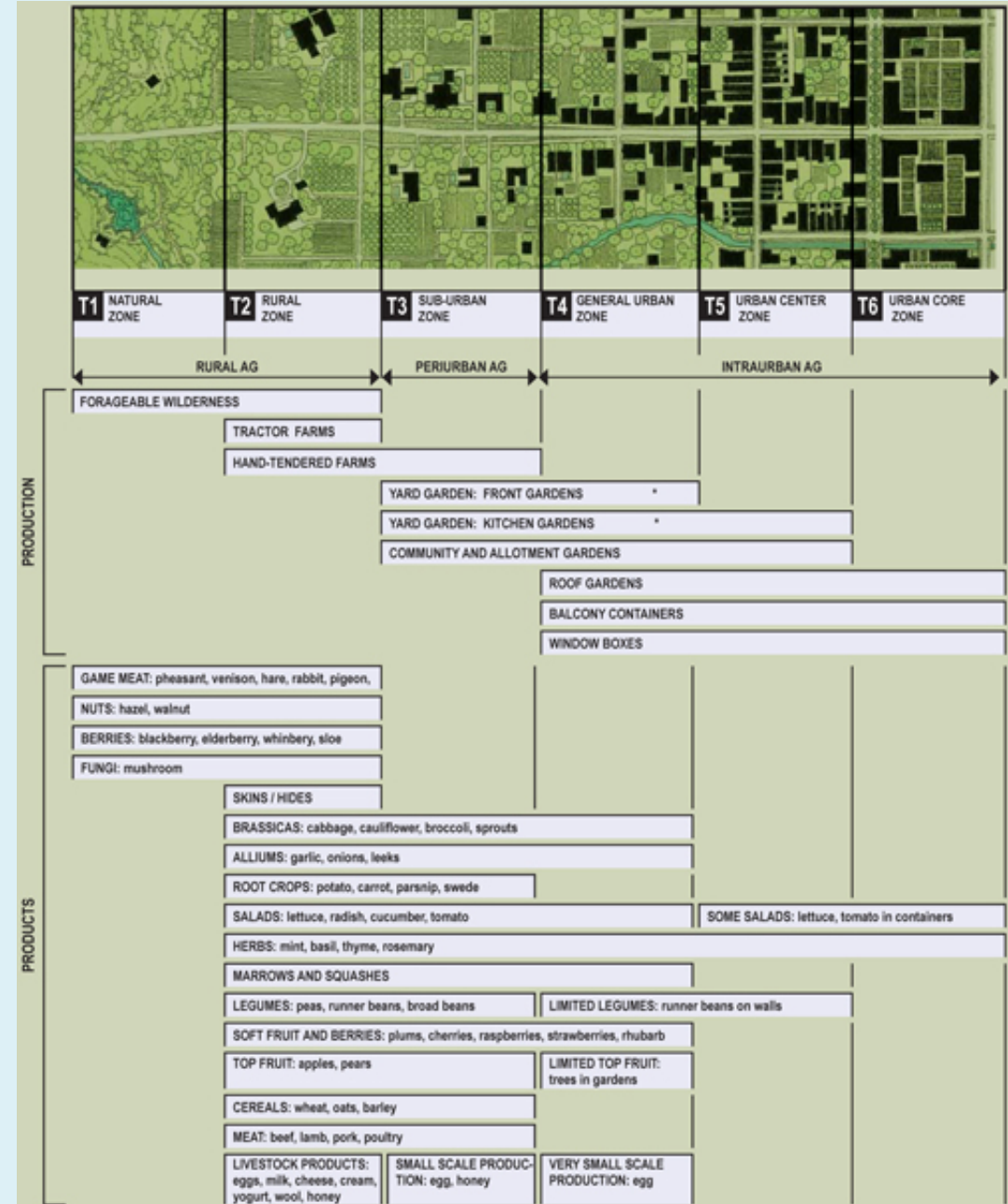
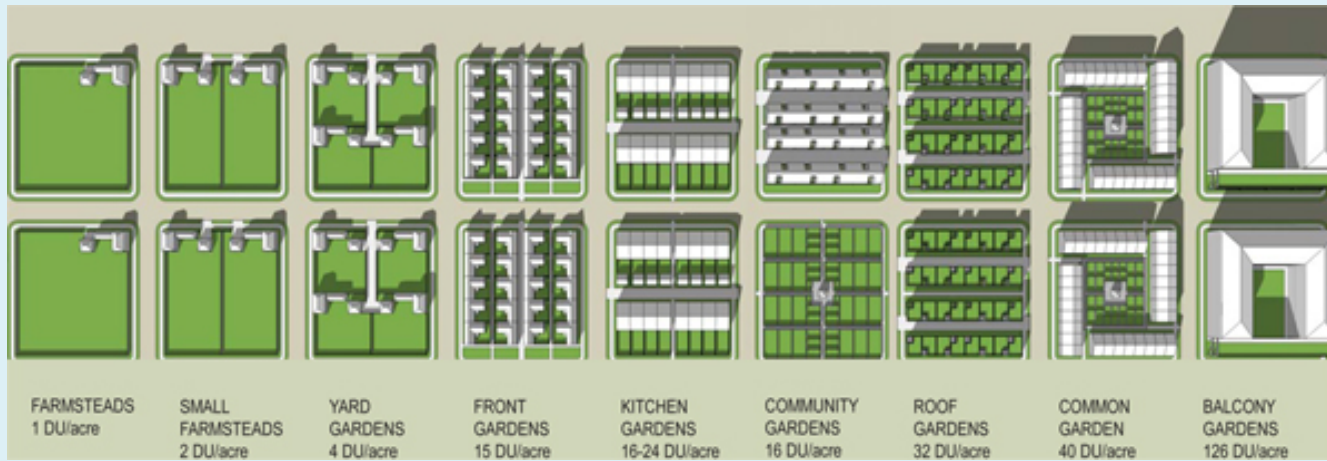
### ***CASE STUDIES:***

- Case Study in California –The created “urban agricultural incentive zones”
- **On September 28, Governor Jerry Brown signed into law the [Urban Agriculture Incentive Zones Act \(AB 551\)](#)**
- AB 551 Bill: [http://leginfo.legislature.ca.gov/faces/billNavClient.xhtml?bill\\_id=201320140AB551](http://leginfo.legislature.ca.gov/faces/billNavClient.xhtml?bill_id=201320140AB551)  
<http://articles.latimes.com/2013/oct/02/local/la-me-urban-agriculture-law-20131003>

# URBAN FARMS CONTINUED

## CASE STUDIES:

- Different scales of production.
- **Garden Cities: Theory & Practice of Agrarian Urbanism** 2011, The Prince's Foundation for the Built Environment  
By: Andres Duany and Duany Plater-Zyberk & Company



## ***URBAN FARMS CONTINUED***

### ***CASE STUDIES:***

[Prairie Crossing events, Grayslake, IL](http://www.prairiecrossing.com/)

<http://www.prairiecrossing.com/>



## **Identification of Key Problem Issue Areas**

Urban farms, community gardens, food hub....LDC needs to further define compatibility issues. How do we create incentives to provide opportunities in appropriate areas? Multi-faceted values are important.

## **How to improve the LDC**

Create metrics that will address and define different scales of food along the transect; from rural to peri-urban and intra-urban.

Identify “urban agriculture incentive zones.” These areas can be public/private ventures. Identify these areas by looking at food deserts found in Austin as well as scales of food production.

Create a metric that states that addresses access to healthy food (groceries, farmer-to-consumer sales, etc.)

## **Brief Case Study:**

SLIDE 1: STAR Community Index: Austin is one of the 10 pilot cities now refining a new national sustainability benchmarking tool, the STAR Community Index. Star Index, Goals for Food Access and Nutrition- Access to Food (Number 5a): Over 80% of residents live within a walkable half-mile of grocery store and also a direct farmer-to-consumer sales location, or within a walkable half-mile of a public transit station that provides service to a grocery store and direct farmer-to-consumer sales location in under 15 minutes one-way travel time. Of the remaining population, no more than 25% are allowed to be low-income or minority.

Definition of Direct farmer-to consumer sales location are sites where consumers can buy directly from farmers, including farmers markets, farm stands, CSA programs, food buying clubs and pick your own.

SLIDE 2: Case study in Austin – where 4 big farms are located in East Austin. Map showing their location in relationship with the neighborhood. Identified existing open space in that neighborhood.

SLIDE 3: Austin: Add mile radius and add map of all the urban farms and market gardens found in Austin

SLIDE 4: Case Study in California – add images and map about this case study. The created “urban agricultural incentive zones”

<http://articles.latimes.com/2013/oct/02/local/la-me-urban-agriculture-law-20131003>

SLIDE 5: Agricultural Urbanism case study: Look at Duany’s book on “Theory & Practice of Agrarian Urbanism” Example: Prairie Crossing, Illinois. Different scales of production.