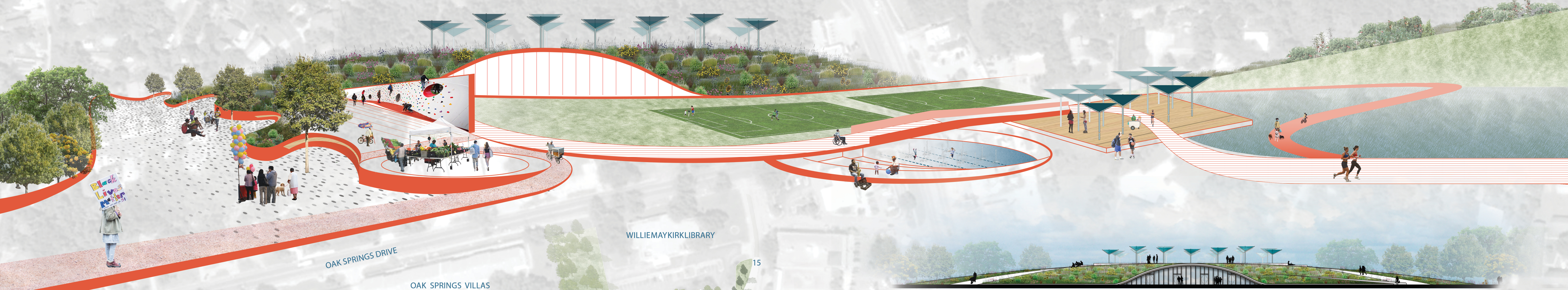
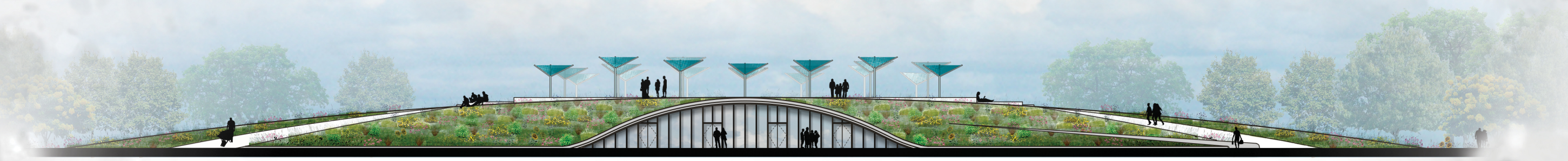


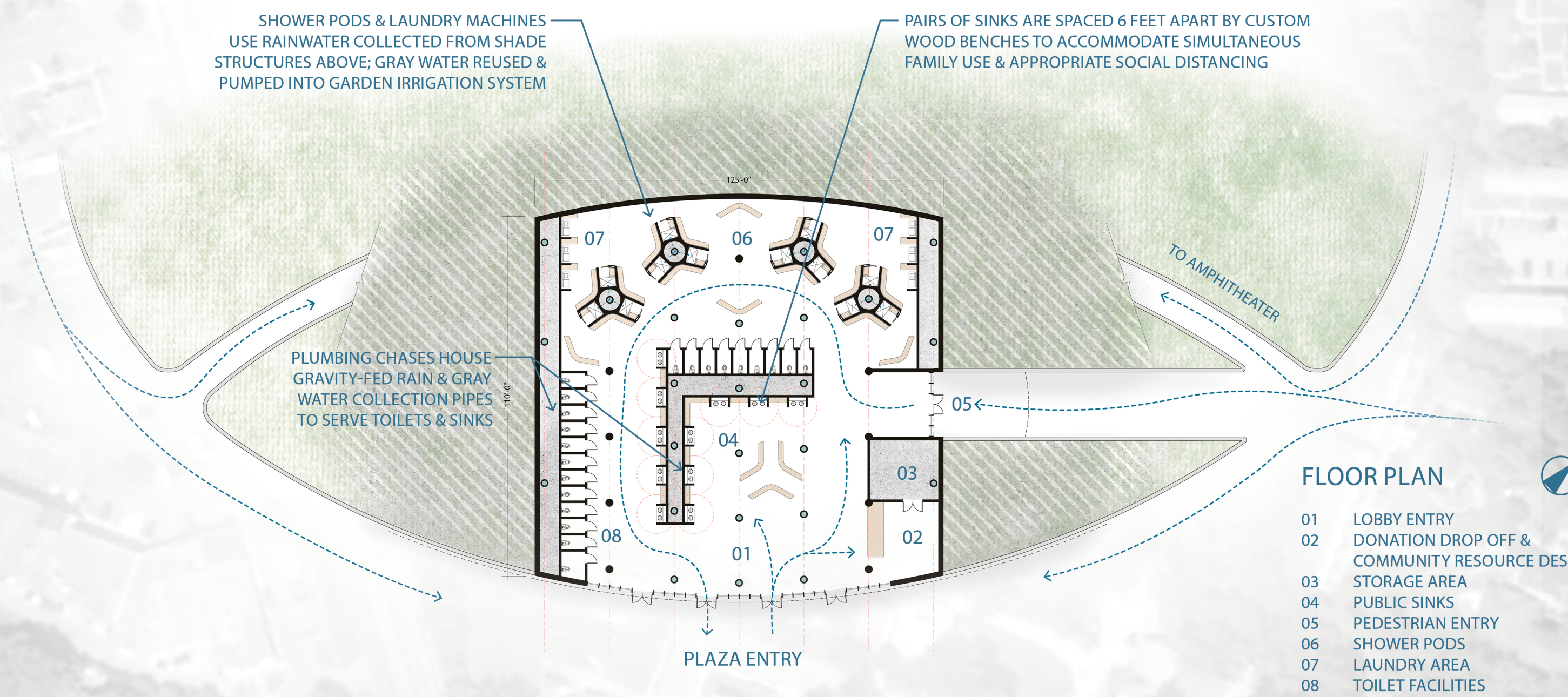
TILLERY PARK: A PLACE FOR DIGNITY & COMMUNITY IN TIMES OF UNCERTAINTY



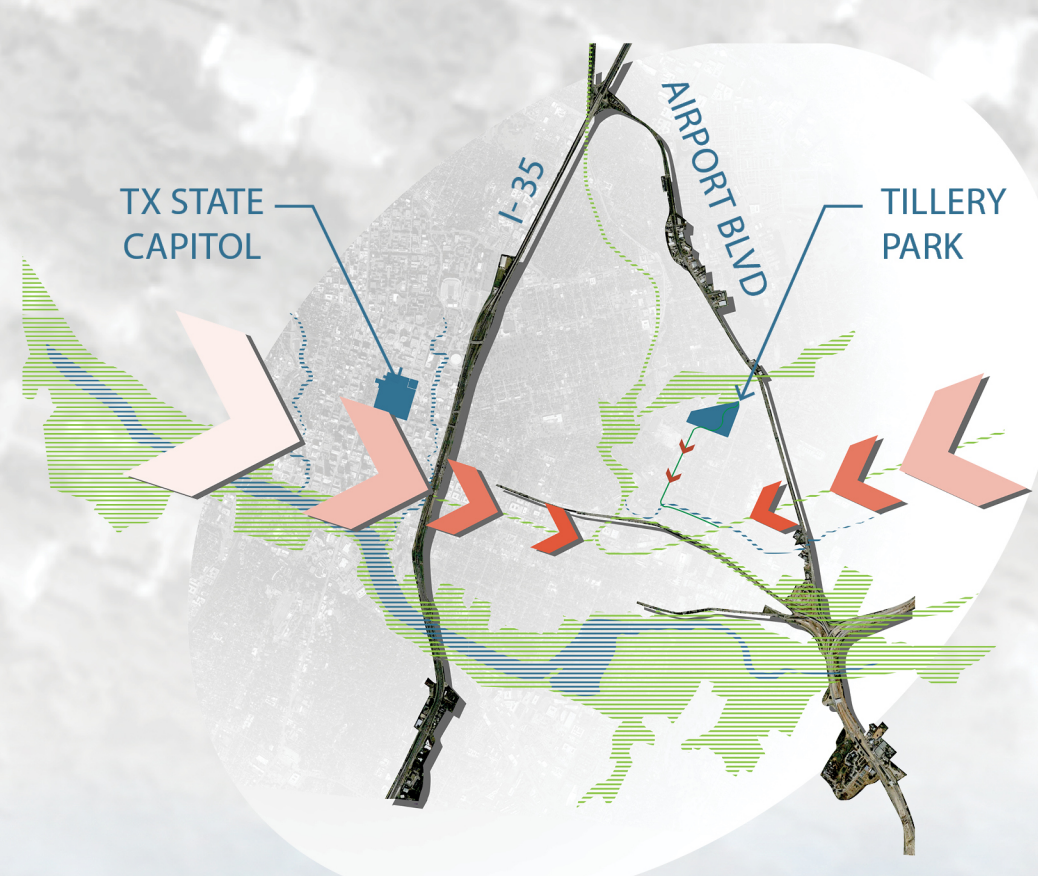
- SITE PLAN**
- VEHICULAR ENTRY, PARKING LOT, PICK-UP & DROP-OFF PLAZA
 - WEEKEND FARMERS MARKET & COMMUNITY EVENT SPACE
 - GARDEN PARK
 - TREE GROVE
 - PLAYGROUND
 - SOCCER FIELDS
 - AMPHITHEATER
 - PRODUCTIVE GARDENS
 - SLOPING LAWN
 - LARGE PICNIC PAVILION & SMALL BOAT LAUNCH
 - SHADE TREES & MULTILAYER UNDERSTORY
 - PICNIC LAWN
 - SPLASH PAD & SMALL PICNIC SHELTER
 - TREE GROVE
 - PUBLIC TRANSIT CONNECTION
 - WATER'S EDGE SMALL PICNIC AREA
 - COMMUNITY LEARNING GARDENS
 - WILDFLOWER MEADOW
 - ELEMENTARY SCHOOL TRAIL CONNECTION
 - TRAIL CONNECTION TO COMMUNITY COLLEGE



FRONT ELEVATION



- FLOOR PLAN**
- LOBBY ENTRY
 - DONATION DROP OFF & COMMUNITY RESOURCE DESK
 - STORAGE AREA
 - PUBLIC SINKS
 - PEDESTRIAN ENTRY
 - SHOWER PODS
 - LAUNDRY AREA
 - TOILET FACILITIES



URBAN CLEANLINESS PARK

Tillery Park is envisioned as a community anchor during times of normalcy; yet it has the capacity to become a source of stability during periods of uncertainty.

RESILIENCY | COMMUNITY

While Tillery Park is located between several transit corridors that have the history and potential to separate neighborhoods, the Tillery Urban Cleanliness Park serves as a hub that presents an improved quality of life for all East Austinites. The concept for this park is to be a place that provides stability for all members of the community. As a resource for personal wellness, it is designed to withstand periods of uncertainty or chaos. The site includes beautiful walking trails that provide a variety of views and experiences of nature and recreation, and the land is also productive. Two portions of the site have been allocated for community gardens that have the capacity to output large volumes of produce for the surrounding community. This is not only an asset during times of stability, but when a disaster or pandemic impacts supply chains to grocery stores, a community garden of this scale will be invaluable. Additionally, these productive agricultural projects will provide sources of income for people experiencing homelessness who come to Tillery Park for other services. An opportunity to earn a meal or a living wage by working in these gardens while simultaneously coexisting with other members of the community, is one small step in breaking down the stigma of homelessness. Socially distant and separated facilities - paired sinks allow families to wash up together, while maintaining a social distance from other users. There is a clear path for visitors to circulate around the space and the hallways are wide enough to accommodate groups of people without fear of overcrowding. The parking lot at the primary vehicular entry is designed as a flexible space that can be purposed as a parking lot for farmers market vendors, a plaza for community events, or a single-file pick up and drop off area for cars needing to drop off donations, pick up a produce box, or a pop-up vaccine or testing location. The site links to a larger existing trail system within East Austin, connecting existing users of Tillery Fields to those who were previously unable to access the site. The Boggy Creek Greenbelt as well as other green spaces along the Colorado River will be connected via trail network, and punctuated by sites such as Tillery Park, which provides services and amenities catered to the specific needs of the diverse residents of East Austin.

